

**Specification**

**Living room and dining room**

- Wall – painted stucco
- Flooring – quartzite

**Bedrooms**

- Wall – painted stucco
- Flooring – wood

**Kitchen**

- Wall – composite stone and painted stucco
- Flooring – quartzite
- Furniture – birch faced and composite stone
- Appliances:
  - Microwave oven
  - Main oven
  - Ceramic hob
  - Extractor fan
  - Refrigerator
  - Dishwasher

**Bathrooms**

**Wc**

- Wall – terracota tile and painted stucco
- Flooring – quartzite
- Stone wash basin
- Sanitaryware by Catalano

**Main en-suite bathroom**

- Wall – terracota tile and painted stucco
- Flooring – wood
- White ceramic wash basin
- Sanitaryware by Catalano

**Bathroom**

- Wall – terracota tile and painted stucco
- Flooring – wood
- White ceramic wash basin
- Sanitaryware by GSI

**Miscellaneous**

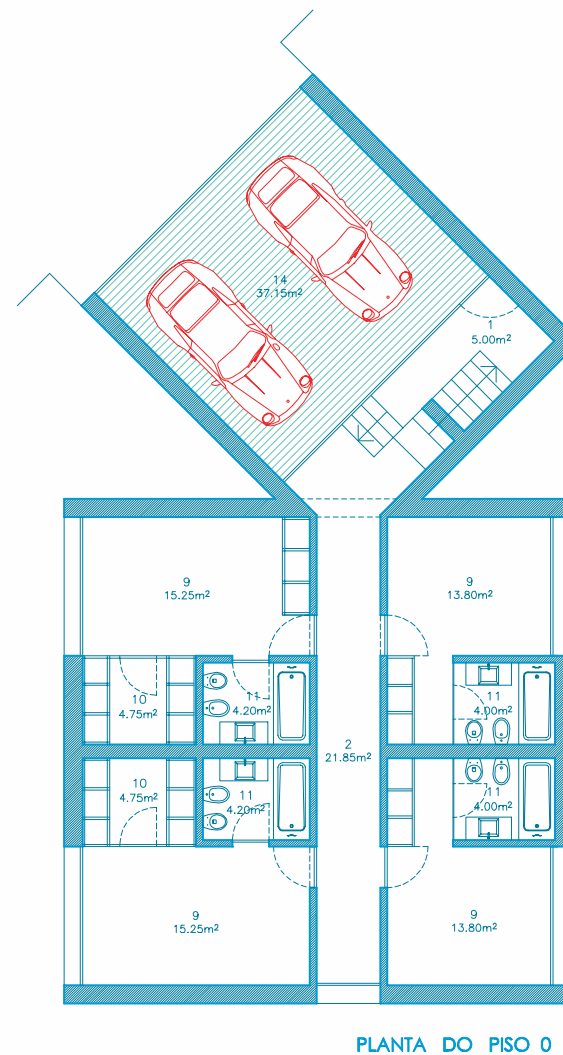
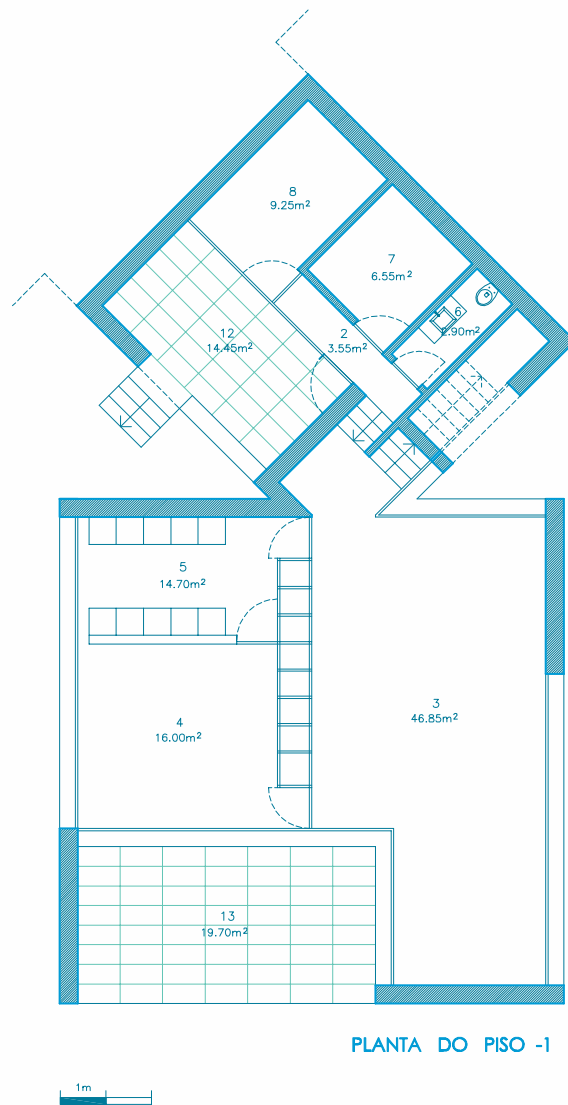
- Gas central heating
- Cable TV infrastructure
- Security alarm
- Broadband internet infrastructure
- Pre-installation for air conditioning
- Automatic roof irrigation system
- Fireplace or stove



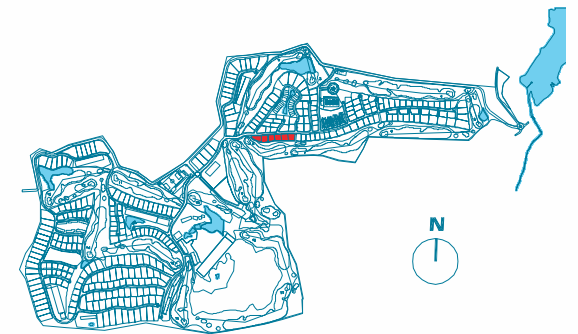
“Each house consists of two linked cubic structures that intersect at 45°, separating the vertical circulation area and garage from the remainder areas of the house . . . the house is built on two levels: the elevation at street level where the structure is lower, out of sight and containing the accesses; and the ground level so to speak where the two house levels anchor on the land and open to the surroundings.”

**Gonçalo Byrne**  
Architect

Photographs are illustrative only. Details and specification may be subject to variation and should not form part of any contract.



1. HALL
2. HALLWAY/STAIRS
3. LIVING ROOM
4. DINING ROOM
5. KITCHEN
6. WC
7. LAUNDRY
8. STOREROOM
9. SUITE
10. DRESSING ROOM
11. BATHROOM
12. COVERED TERRACE
13. BALCONY
14. PARKING LOTS



Architectural plan not yet adapted to engineering plans. Subject to changes.