

# LOTS 240-245

THREE BEDROOM VILLAS  
FOUR BEDROOM OPTION ALSO AVAILABLE

## Specification

### Living room and dining room

- Wall – painted stucco
- Flooring – quartzite

### Bedrooms

- Wall – painted stucco
- Flooring – wood

### Kitchen

- Wall – terracota tile
- Flooring – quartzite and composite stone
- Furniture – laminate and composite stone
- Appliances:
  - Microwave oven
  - Main oven
  - Ceramic hob
  - Extractor fan
  - Refrigerator
  - Dishwasher

### Bathrooms

#### Wc

- Wall – terracota tile
- Flooring – quartzite
- Stone wash basin
- Sanitaryware by GSI

#### Main en-suite bathroom

- Wall – quartzite and painted stucco
- Flooring – wood
- White ceramic wash basin
- Sanitaryware by GSI

#### Bathroom

- Wall – quartzite and painted stucco
- Flooring – wood
- White ceramic wash basin
- Sanitaryware by GSI

### Miscellaneous

- Gas central heating
- Cable TV infrastructure
- Security alarm
- Broadband internet infrastructure
- Pre-installation for air conditioning
- Automatic roof irrigation system
- Fireplace or stove



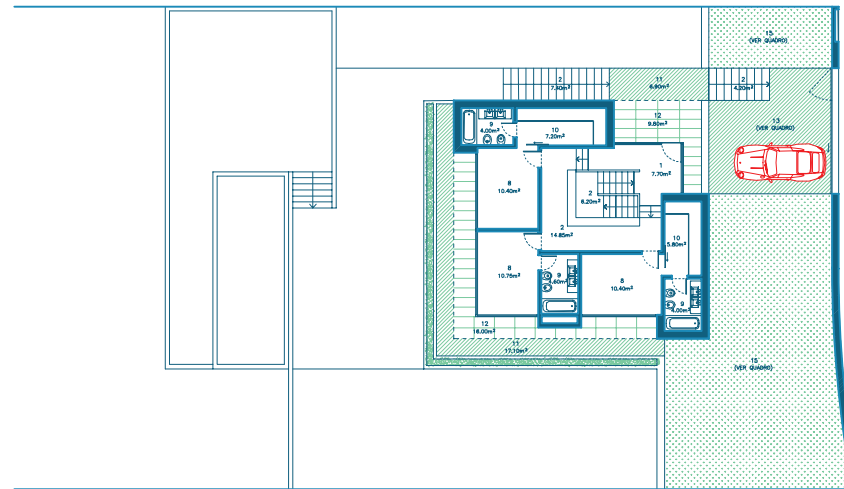
“In the context of preserving privacy in the living spaces and guarantee adequate sun exposure it is proposed to limit openings on the West and North facing walls, favouring on the other hand, openings on the South and East, which at upper level will be serviced by a continuous veranda.”

**Alcino Soutinho**  
Architect

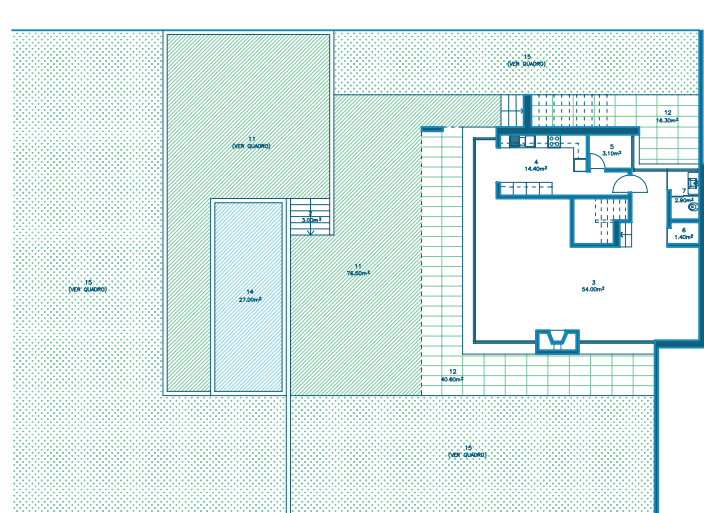
Photographs are illustrative only. Details and specification may be subject to variation and should not form part of any contract.

LOTS 240-245 – THREE BEDROOM VILLAS  
 FOUR BEDROOM OPTION ALSO AVAILABLE

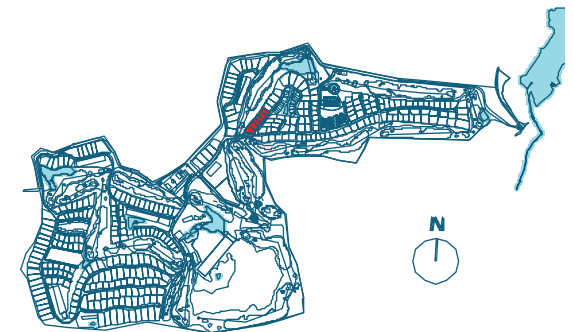
1. HALL
2. HALLWAY/STAIRS
3. LIVING AND DINING ROOM
4. KITCHEN
5. LAUNDRY
6. STOREROOM
7. WC
8. SUITE
9. BATHROOM
10. DRESSING ROOM
11. TERRACE
12. COVERED TERRACE
13. PARKING LOTS
14. SWIMMING POOL
15. GARDEN



PLANTA DO PISO 1



PLANTA DO PISO 0



Architectural plan not yet adapted to engineering plans. Subject to changes.