

Specification

Living room and dining room

- Wall – painted stucco
- Flooring – solid wood

Bedrooms

- Wall – painted stucco
- Flooring – solid wood

Kitchen

- Wall – painted stucco
- Flooring – composite stone
- Furniture – laminate and composite stone
- Appliances:
 - Microwave oven
 - Main oven
 - Ceramic hob
 - Extractor fan
 - Refrigerator
 - Dishwasher

Bathrooms

Wc

- Wall – marble and painted stucco
- Flooring – marble
- White ceramic wash basin
- Sanitaryware by GSI

Main en-suite bathroom

- Wall – marble and painted stucco
- Flooring – marble
- White ceramic wash basin
- Sanitaryware by GSI

Bathroom

- Wall – marble and painted stucco
- Flooring – marble
- White ceramic wash basin
- Sanitaryware by GSI

Miscellaneous

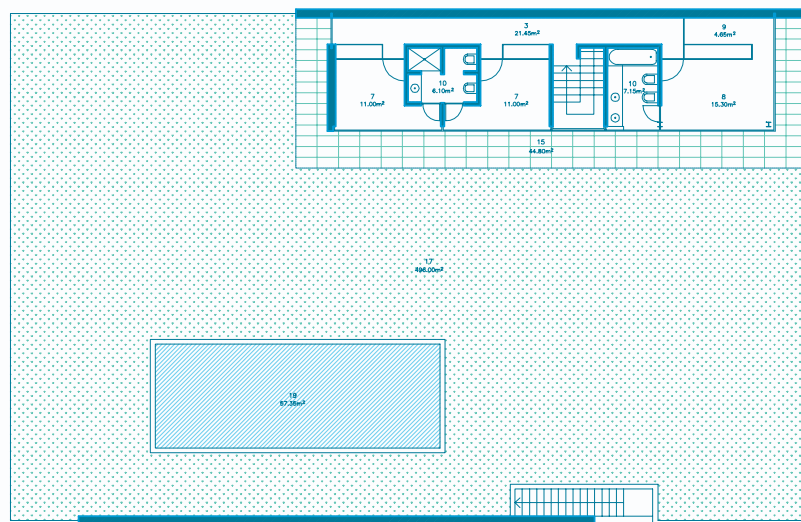
- Gas central heating
- Cable TV infrastructure
- Security alarm
- Broadband internet infrastructure
- Pre-installation for air conditioning
- Automatic roof irrigation system
- Fireplace or stove



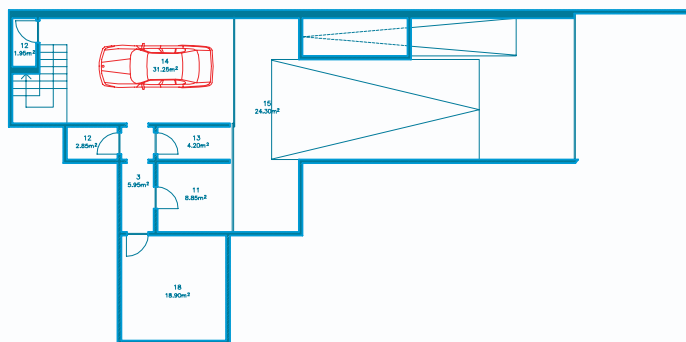
“The buildings and their respective development offer a greater levelling of the upland conferring greater stability to the 4 constructions therein arising. On the exterior these elements create tensions and dynamics, establishing a dialogue between themselves and nature, creating opacity and transparency, impetus and direction, texture and colour, culminating as integrated parts of harmony and unity.”

Álvaro Leite Siza
Architect

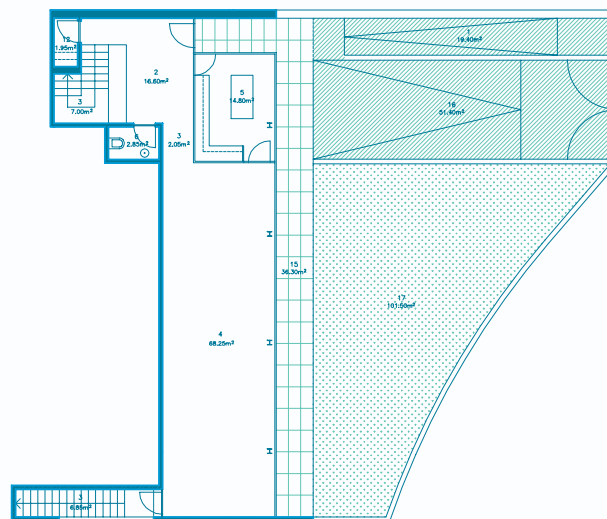
Photographs are illustrative only. Details and specification may be subject to variation and should not form part of any contract.



PLANTA DO PISO 1

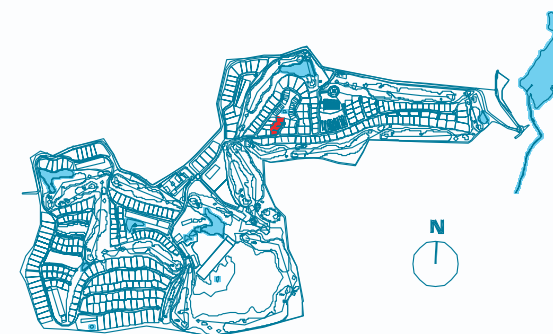


PLANTA DO PISO 0



PLANTA DO PISO 0

1. ENTRANCE TERRACE
2. HALL
3. HALLWAY/STAIRS
4. LIVING AND DINING ROOM
5. KITCHEN
6. WC
7. BEDROOM
8. SUITE
9. DRESSING ROOM
10. BATHROOM
11. LAUNDRY
12. STOREROOM
13. WINE-CELLAR
14. GARAGE
15. COVERED TERRACE
16. TERRACE
17. GARDEN
18. TECHNICAL ROOM
19. SWIMMING POOL



Architectural plan not yet adapted to engineering plans. Subject to changes.