

LOT 288 THREE BEDROOM TOWNHOUSES

Specification

Living and dining room

- Wall – painted stucco
- Flooring – hydraulic tile

Bedrooms

- Wall – painted stucco
- Flooring – wood

Kitchen

- Wall – composite stone and painted stucco
- Flooring - hydraulic tile
- Furniture – laminate and composite stone
- Appliances:
 - Microwave oven
 - Main oven
 - Ceramic hob
 - Extractor fan
 - Refrigerator
 - Dishwasher

Bathrooms

Wc

- Wall – marble and painted stucco
- Flooring - hydraulic tile
- Stone wash basin
- Sanitaryware by GSI

En-suite bathroom

- Wall – terracotta tile and painted stucco
- Flooring - wood
- White ceramic wash basin
- Sanitaryware by GSI

Miscellaneous

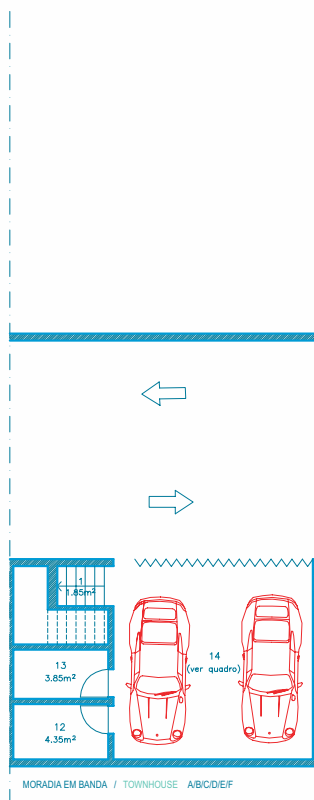
- Air conditioning
- Cable TV infrastructure
- Security alarm
- Broadband internet infrastructure
- Communal swimming pool for each lot
- Automatic roof irrigation system
- Fireplace or stove



“The architectural image is configured beyond the volumetric articulation by facades where glass is the more prominent material, all complementing the roofings which are covered by vegetable elements.”

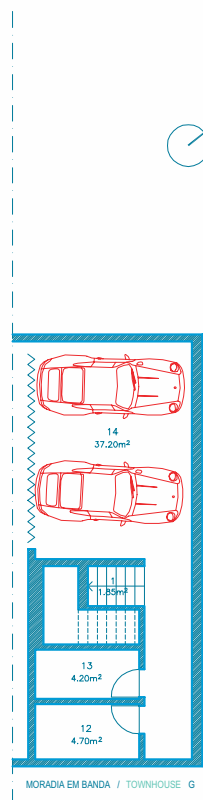
Alcino Soutinho
Architect

Photographs are illustrative only. Details and specification may be subject to variation and should not form part of any contract.

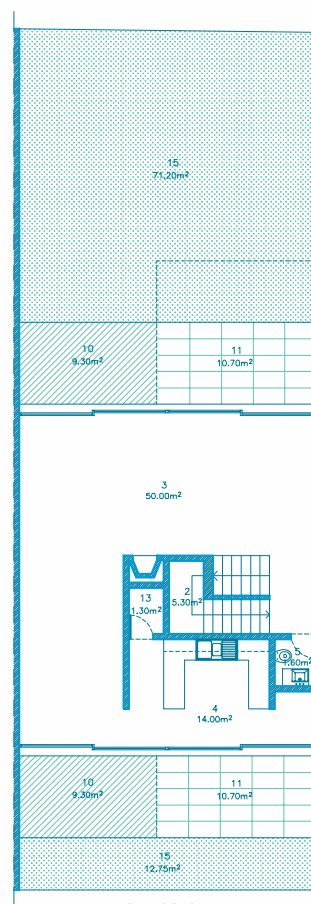


MORADIA EM BANDA / TOWNHOUSE A/B/C/D/E/F

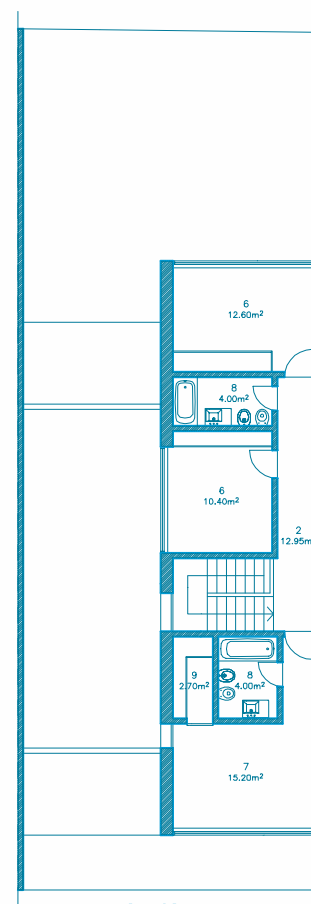
PLANTA DO PISO -1



MORADIA EM BANDA / TOWNHOUSE G

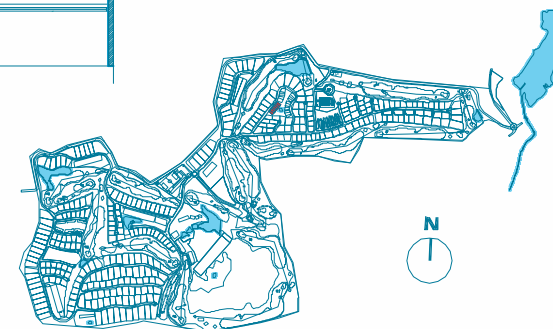


PLANTA DO PISO 0



PLANTA DO PISO 1

1. HALL
2. HALLWAY/STAIRS
3. LIVING AND DINING ROOM
4. KITCHEN
5. WC
6. BEDROOM
7. SUITE
8. BATHROOM
9. DRESSING ROOM
10. TERRACE
11. COVERED TERRACE
12. LAUNDRY
13. STOREROOM
14. GARAGE
15. GARDEN



Architectural plan not yet adapted to engineering plans. Subject to changes.